

# LANDSCAPE MASTERPLAN





KEY DIAGRAM



LEGEND	
	SITE BOUNDARY
	LOW DENSITY MASS PLANTING
	BUSH TUCKER MASS PLANTING
	FEATURE MASS PLANTING
	BIORETENTION BASIN PLANTING
	SWALE PLANTING
	SPORT FIELD
	GENERAL TURF
	HYDRO SEED
	DECO GRANITE
	COLOURED CONCRETE
	EXPOSED AGGREGATE CONCRETE
	INTERNAL PATHWAY
	ROADWAY
	PERMEABLE PAVING





MASTER PLAN



Notes

- 1. Main Assembly Area - Cola
- 2. Main Pedestrian Access Ramp- The Ant Trail
- 3. Steep Batter Mass Planting
- 4. Ball Courts
- 5. Turf Batter
- 6. Outdoor Learning Space imprinted Echinda footprint concrete features connecting to the ant trail and perimeter bench seats to provide opportunities for outdoor learning.
- 7. Outdoor classroom and main hall backstage spill area for performances with concrete bleacher seating and canopy shading.
- 8. Rugby Field
- 9. Soccer Field
- 10. Cricket Nets x 4
- 11. Custom Echidna shade structure with organic exposed aggregate seating pockets set in decogranite serounds interspersed by native canopy shade trees.
- 12. Yarning Circle 1
- 13. Natural Water Course
- 14. Bush Tucker Walk
- 15. Cultural Dance Space
- 16. Yarning Circle 2
- 17. Potential Pedestrian Access from Dunoon Road
- 18. Netball Courts
- 19. Bike Parking
- 20. Main School Entry- Entry Signs and Welcome To Country Walk
- 21. Kiss and Drop Feature Plants and Flag Poles
- 22. Agricultural Area
- 23. School Entry Feature Sign
- 24. Main school entry ramp access
- 25. Car Park
- 26. Agricultural Shed

LEGEND

	SITE BOUNDARY
	LOW DENSITY MASS PLANTING
	BUSH TUCKER MASS PLANTING
	FEATURE MASS PLANTING
	BIORETENTION BASIN PLANTING
	SWALE PLANTING
	SPORT FIELD
	GENERAL TURF
	HYDRO SEED
	DECO GRANITE
	COLOURED CONCRETE
	EXPOSED AGGREGATE CONCRETE
	INTERNAL PATHWAY
	ROADWAY
	PERMEABLE PAVING
	2.100m SECURITY TOP PALISADE FENCE
	1500mm POST AND RAIL RURAL STYLE FENCING
	EXISTING RURAL BOUNDARY FENCE
	COMPOUND DIPLOMAT FENCING
	EXTERNAL- 5 STRAND BARBWIRE FENCE
	INTERNAL - 4 STRAND BARBWIRE FENCE
	PROPOSED TREE PLANTING
	EXISTING TREE TO BE MAINTAINED

NOTE:

- SWALE PLANTING = 6 x Tube Stock per m<sup>2</sup>
- MASS PLANTING FEATURE = 4 x 2.5Lt Pots per m<sup>2</sup>
- MASS PLANTING GENERAL = 6 x Tube Stock per m<sup>2</sup>
- TREES CAR PARK = Minimum 75Lt Pot Size
- TREES WITHIN SCHOOL SECURITY FENCE = Minimum 75Lt Pot Size
- TREES WITHIN BUS BAY = Minimum 75Lt Pot Size
- TREES OUTSIDE SECURITY FENCING = Minimum 5Lt Pot Size



DETAIL PLAN



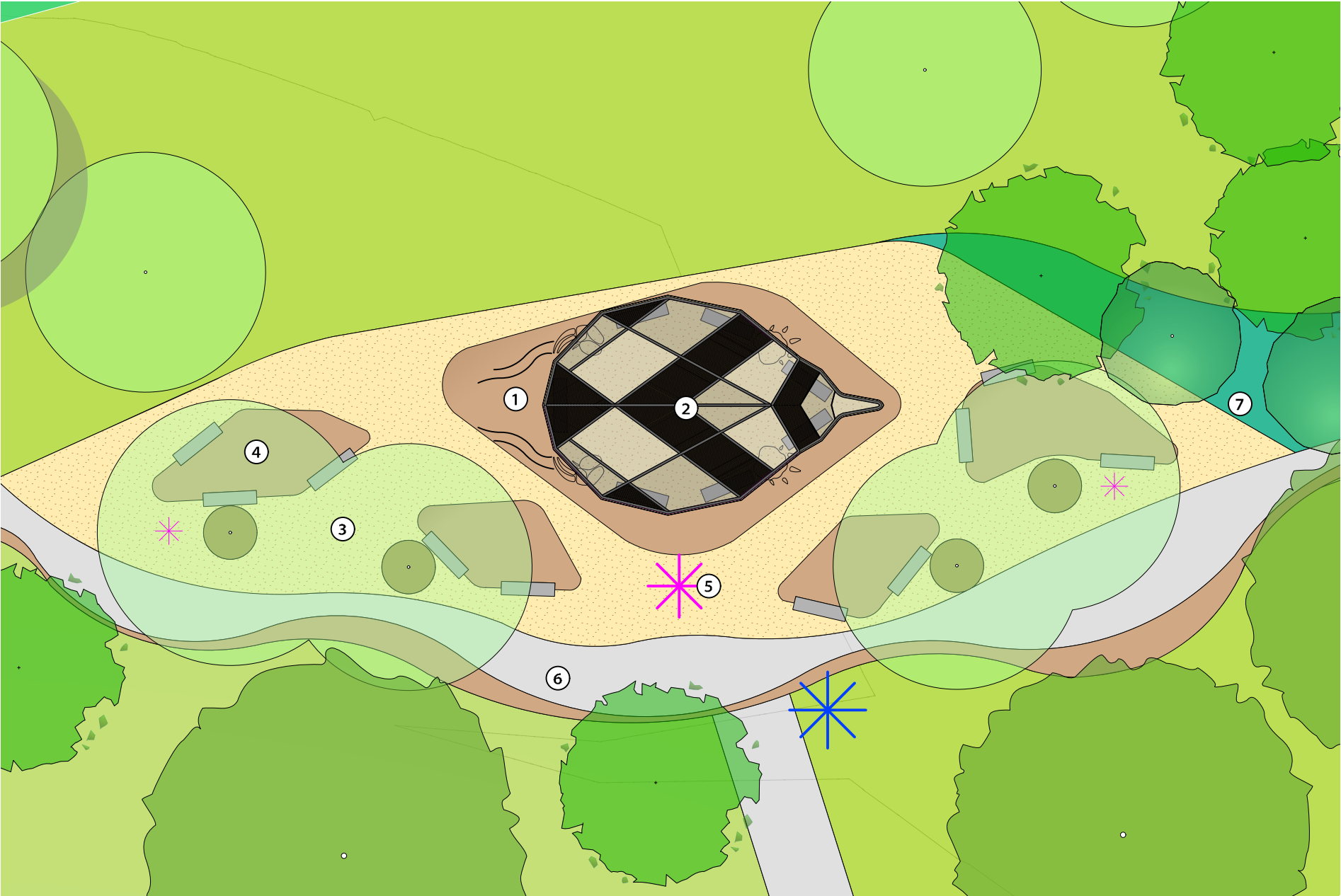
- Notes**
- Outdoor Classroom/Sports Field Viewing- In situ concrete seating to the perimeter with exposed aggregate feature concrete and deco granite center.
  - Sport Field Viewing/Student Relaxation Space - Pre-cast concrete log seating with Reckli form liner patterning to front and back faces.
  - The Ant Trail- The main pedestrian linking pathway in grey cement with brown feature aggregate exposed along the path edge as indicated on the plan.
  - The Ant Trail- Access ramp in grey concrete with brown feature aggregate exposed along the edge as indicated on the plan. At the landings, gabion seating using recycled materials from the old site and finished with hardwood timber slat seat tops, form pockets for student study or social gathering.
  - Main Stair Access- Teird staircase for direct access to sports fields and playground. Potential for school mural on retaining wall under cola as stair feature and to increase visual appeal looking back to the building from sport fields.
  - Battered Mass Planting- For local fauna and flora support and place making. Visual site lines to be maintained from buildings through to the playground for monitoring students activities.
  - Outdoor Learning/Aided Learning- Multi use outdoor learning space with access for aided learning and structured class. The space will also provide an area for the main hall overflow. Decogranite permeable surface with in situ concrete bleacher seating to the back corner shaded by canopy trees.
  - Main Entry and Gathering Space- An inclusive space for communal gathering and place-making with a Welcome to Country and endemic plantings. Community Art display to be chosen in collaboration with cultural representatives.
  - Main entry with covered access path. Flag poles and wayfinding signs are to be located in a central location. Exposed brown feature aggregate with concrete bleacher seating to the back to form a waiting area for student pick up.
  - Araucaria cunninghamii - Hoop Pine significant planting
  - Main pedestrian access from Dunoon road
  - Bike Parking
  - Buninj echidna shade structure with exposed aggregate feature pads with stenciled patterning representing the echidna footprints. Concrete seating pads to be set into deco granite interspersed with large native shade trees.
  - Yarning Circle- With gabion style seating using recycled brick materials from the old school site.
  - Bush Tucker walk with plant information plaques
  - Cultural Dance and Outdoor Learning Space with organic stone bolder seating and bare earth centre.
  - Rock formation sculptures with endemic canopy cover
  - Natural watercourse to be revegetated with endemic species for ecosystem support

LEGEND	
	SITE BOUNDARY
	LOW DENSITY MASS PLANTING
	BUSH TUCKER MASS PLANTING
	FEATURE MASS PLANTING
	BIORETENTION BASIN PLANTING
	SWALE PLANTING
	SPORT FIELD
	GENERAL TURF
	HYDRO SEED
	DECO GRANITE
	COLOURED CONCRETE
	EXPOSED AGGREGATE CONCRETE
	INTERNAL PATHWAY
	ROADWAY
	PERMEABLE PAVING
	CULTURAL COMMUNITY ART
	CULTURAL INFORMATION PLAQUE
	WAYFINDING SIGNS
	MAIN ENTRY SIGNS
	FLAG POLES
	2.100m SECURITY TOP PALISADE FENCE
	1500mm POST AND RAIL RURAL STYLE FENCING
	EXISTING RURAL BOUNDARY FENCE
	COMPOUND DIPLOMAT FENCING
	EXTERNAL- 5 STRAND BARBWIRE FENCE
	INTERNAL - 4 STRAND BARBWIRE FENCE
	PROPOSED TREE PLANTING
	EXISTING TREE TO BE MAINTAINED





# BUNINJ DETAIL PLAN

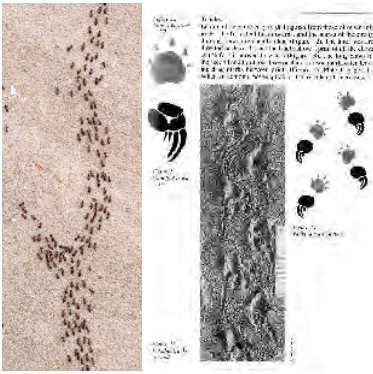


### Notes

1. Stamped Echidna Footprints and Trail  
-Imprinted echidna foot prints into concrete surface to be aligned with pergola structure highlighting shadow patterns and echidna form.
2. Custom Design Echidna Pergola  
-Custom Shade structure to be developed in collaboration with cultural board.  
- Mix materials including aluminum timber batten look, powder coated aluminum frame and laser cut perforated stainless steel sheets patterned with echidna quills.  
-Shade structure to project echidna onto exposed aggregate pad below.
3. Deco Gold- Decomposed Granite with Feature Tree Pits  
-Gold decomposed granite with concrete edging and 1m radius tree cut outs with mulch cover for tree health.
4. Organic Exposed aggregate seating pads  
-Organically shaped concrete seating pads with exposed brown aggregate finish.  
-In situ concrete bench seats to be located as shown  
-Endemic shade trees in tree pits to provide shade to passive recreation areas.
5. Signage  
- Wayfinding signage/plaques to provide opportunity for story telling and integrated cultural learning.
6. Main Access Path - (The Ant Trail)  
-To be brush finished grey concrete with brown exposed aggregate edge with troweled definition between surface finishes. The exposed aggregate contour representing the ant trails running from Ant Hill linking the school to its geographical context and historic surroundings.
7. Bush Tucker Mass Planting Matrix  
-Battered mass planting bush Tucker garden with informative plaques for interactive learning. Opportunity for native fauna support with feed plants and habitat.

### LEGEND

	BUSH TUCKER MASS PLANTING
	GENERAL TURF
	DECO GRANITE
	EXPOSED AGGREGATE CONCRETE
	INTERNAL PATHWAY
	CULTURAL INFORMATION PLAQUE
	WAYFINDING SIGNS
	PROPOSED TREE PLANTING





# YARNING CIRCLE DETAIL PLAN



1 YARNING CIRCLE DETAIL PLAN  
L305 Scale: 1:500

Notes

- 1. Endemic Bush Tucker Gardens  
- Endemic bush tucker garden with brass plaques engraved with information on plant uses and cultural knowledge. Text to be developed in collaboration with cultural board.
- 2. Natural Swale  
- Natural swale to be maintained and revegetated with endemic species.
- 3. Natural Bushrock Sculptural Mounds  
- Natural Bushrock boulders to be placed as key features to mimic the surrounding hills and help highlight local materials to increase sense of place.
- 4. Signs and Information Plaques  
- Opportunities for information plaques to be placed in key locations through the cultural area providing information on bush tucker plants and cultural story telling. All content to be developed in coordination with cultural board.
- 5. Cultural Dance Space  
- Exposed soil dance centre for dust dance ceremonies  
- Deco granite perimeter with carver stone or other local stone bolder seating. Opportunity for cultural carving to be implemented into stone seats. To be developed in consult with cultural board.
- 6. Yarning Circles.  
- Large yarning circles with interlinking pathways for cultural learning.  
- Timber bench seats in circular formation with coloured concrete base.
- 7. Endemic Canopy Trees
- 8. Net Ball/Game Courts  
- Multi use game courts with Mesh perimeter fencing and security gate to EFSG specifications

LEGEND

	BUSH TUCKER MASS PLANTING
	BIORETENTION BASIN PLANTING
	SWALE PLANTING
	GENERAL TURF
	DECO GRANITE
	COLOURED CONCRETE
	EXPOSED AGGREGATE CONCRETE
	INTERNAL PATHWAY
	CULTURAL INFORMATION PLAQUE
	PROPOSED TREE PLANTING





# ENTRY DETAIL PLAN



Notes

- 1. Battered Endemic Mass Planting
- 2. Main Entry Welcome to Country Feature Garden
  - Endemic Plant selection with room for community engagement planting.
  - Collaborative art and cultural totem display gardens either side of the entry walkway with areas for community planting to be incorporated.
  - Welcome to Country sign and school entry feature sign.
- 3. Welcome to Country
  - Customised community collaborative art works and signs at the main school entry to be designed in collaboration with cultural board.
- 4. Meeting Place
  - Curved gabion style bench seating with recycled materials from the old school buildings.
  - Endemic shade trees for place making and cooling.
  - Exposed brown aggregate concrete finish
- 5. Bike Parking Access to Main School Entry
- 6. Bike Parking Access
- 7. Waiting Zone for Student Pick Up
- 8. Main School Access
  - Main covered pedestrian access point from bus drop off with school wayfinding signs and flag poles.
- 9. Bus Drop
- 10. Araucaria cunninghamii- Hoop Pine
  - Hoop Pine stand. A significant species for the area.
- 11. Main Entry Access Ramp
  - Access ramp connecting bus/kiss and drop area to car park and school entry point.
  - School entry to be planted with endemic species to enhance a sense of place and provide sense of arrival.
- 12. Avenue Canopy Trees
- 13. Swale Roadside Planting

LEGEND

	LOW DENSITY MASS PLANTING
	FEATURE MASS PLANTING
	GENERAL TURF
	DECO GRANITE
	COLOURED CONCRETE
	EXPOSED AGGREGATE CONCRETE
	INTERNAL PATHWAY
	ROADWAY
	CULTURAL COMMUNITY ART
	CULTURAL INFORMATION PLAQUE
	WAYFINDING SIGNS
	MAIN ENTRY SIGNS
	FLAG POLES
	2.100m SECURITY TOP PALISADE FENCE
	EXTERNAL- 5 STRAND BARBWIRE FENCE
	PROPOSED TREE PLANTING
	EXISTING TREE TO BE MAINTAINED



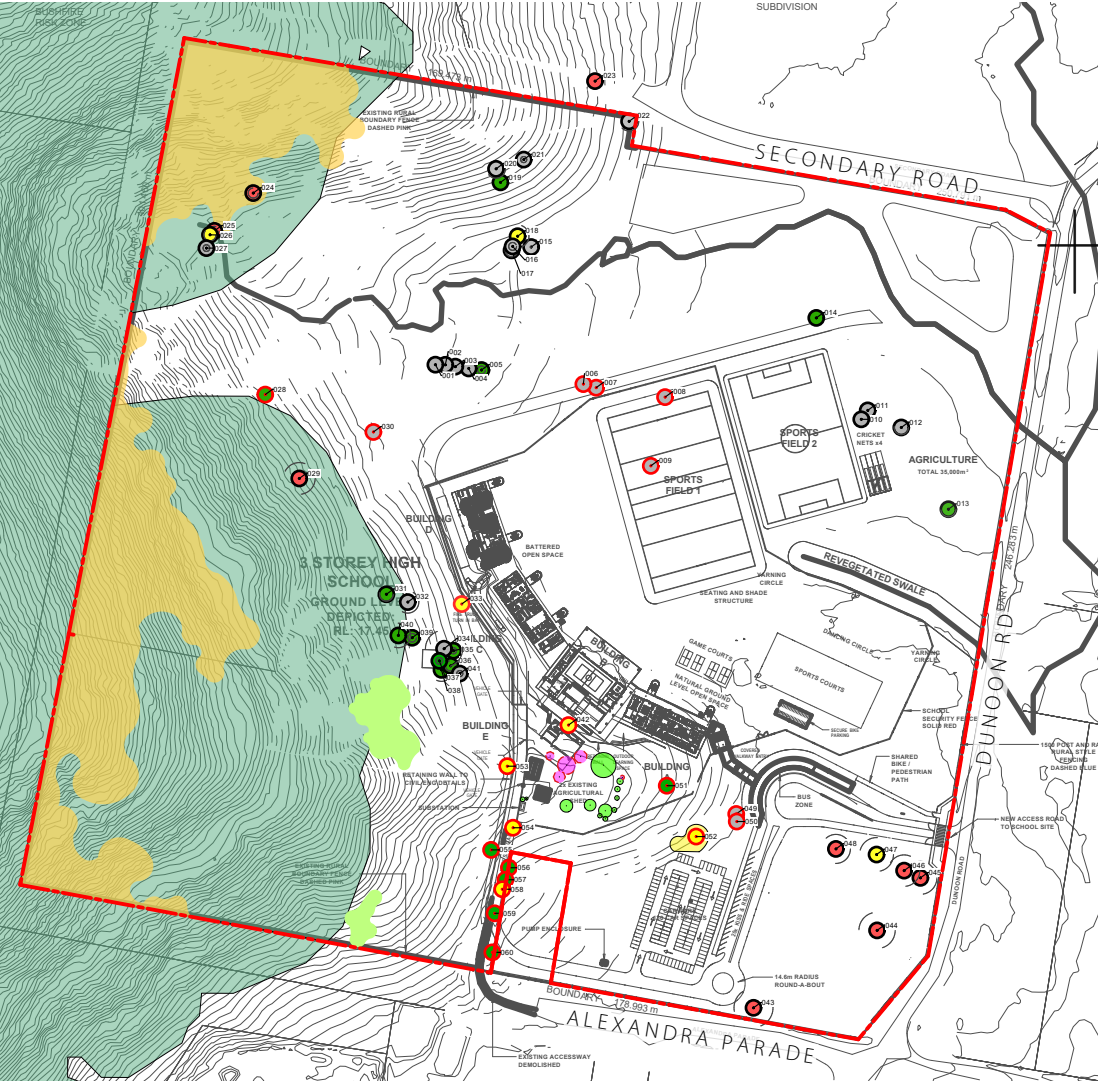


# LANDSCAPE STRATEGIES

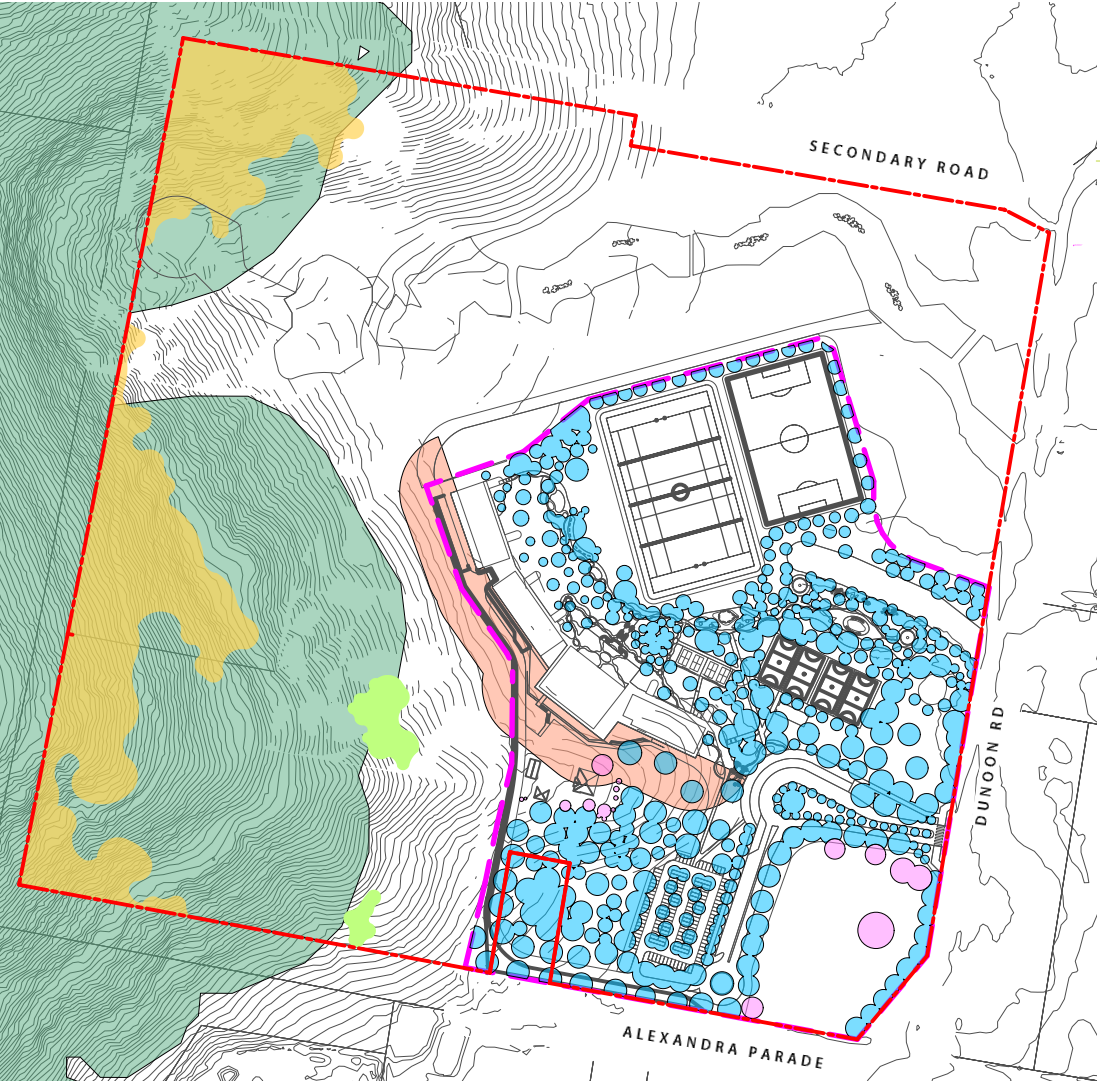




CANOPY COVER



EXISTING CANOPY COVER



INTENDED CANOPY COVER



NOTES

The landscape explores opportunities to increase canopy cover in open spaces particularly within the pink dashed zone identified as the nominal development site area. Proposed works will require minimal removal of existing trees. Opportunity to revegetate areas to the west and north of school building in accordance with APZ and ecological requirements

CALCULATIONS WITHIN DEFINED AREA OF DEVELOPMENT:

Defined Area of Development:	120722.6m <sup>2</sup>
Existing Trees Arborist Report :	1659.9 m <sup>2</sup>
Proposed Trees:	37107.7m <sup>2</sup>
Total Trees:	38767.6 m <sup>2</sup>

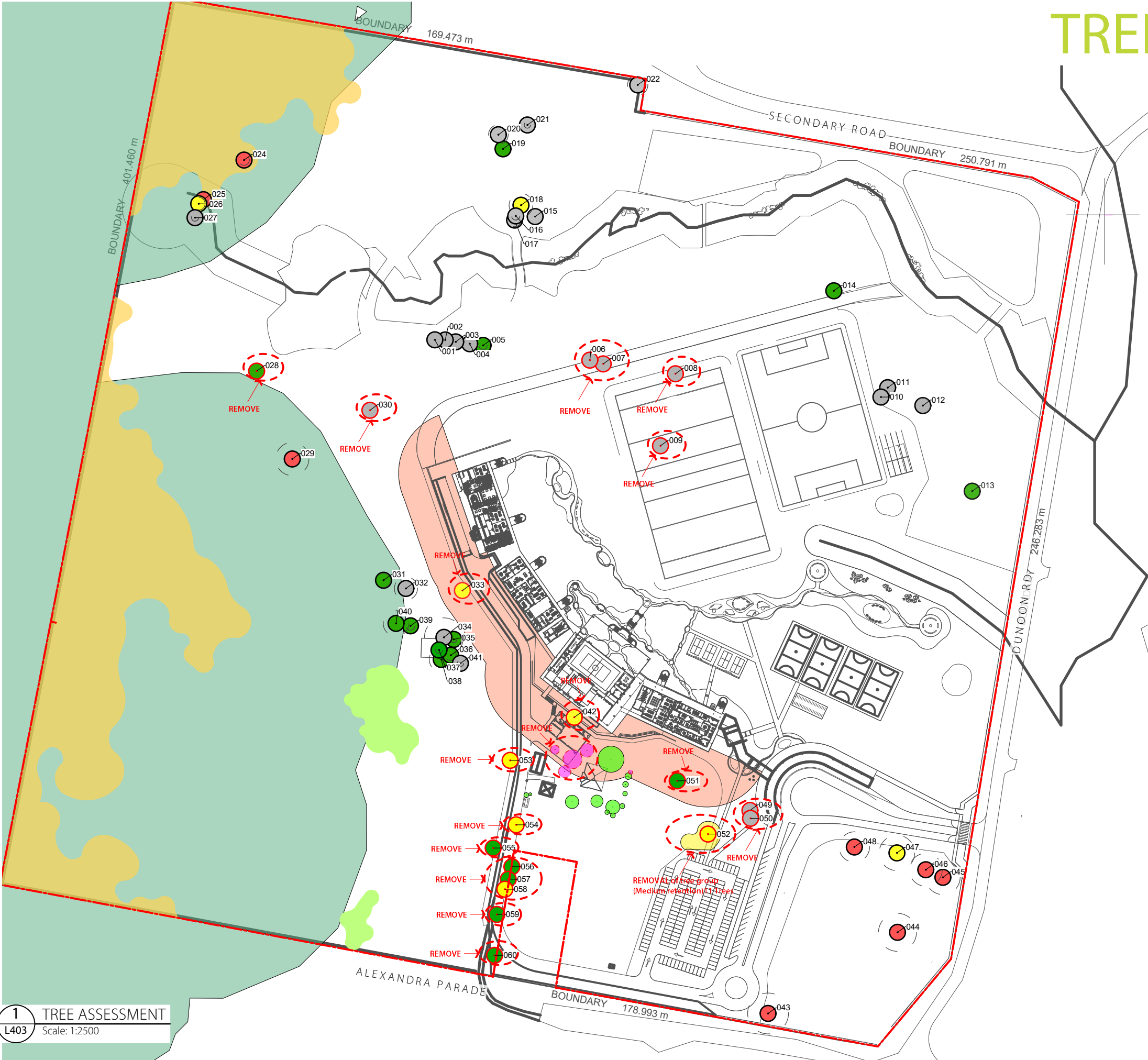
TOTAL CANOPY COVER FOR DEFINED AREA OF DEVELOPMENT : 32.11%

**Refer:** GHD Northern Rivers Flood Recovery- Richmond River High Campus Redevelopment Arboricultural Impact Assessment 02 July 2025





# TREE ASSESSMENT



LEGEND

SITE BOUNDARY

EXISTING TREES TO BE REMOVED

EXISTING VEGETATION

PCT 3064 - VEGETATION TYPE

PCT 3322 - VEGETATION TYPE

IPZ- BUSHFIRE HAZARD ASSESSMENT 30<sup>TH</sup> JUNE 2025

INDICATIVE TREES FROM AERIAL IMAGES REMOVE  
(Nearmaps 19/04/2025)

INDICATIVE TREES FROM AERIAL IMAGES RETAIN  
(Nearmaps 19/04/2025)

RETENTION VALUE

HIGH

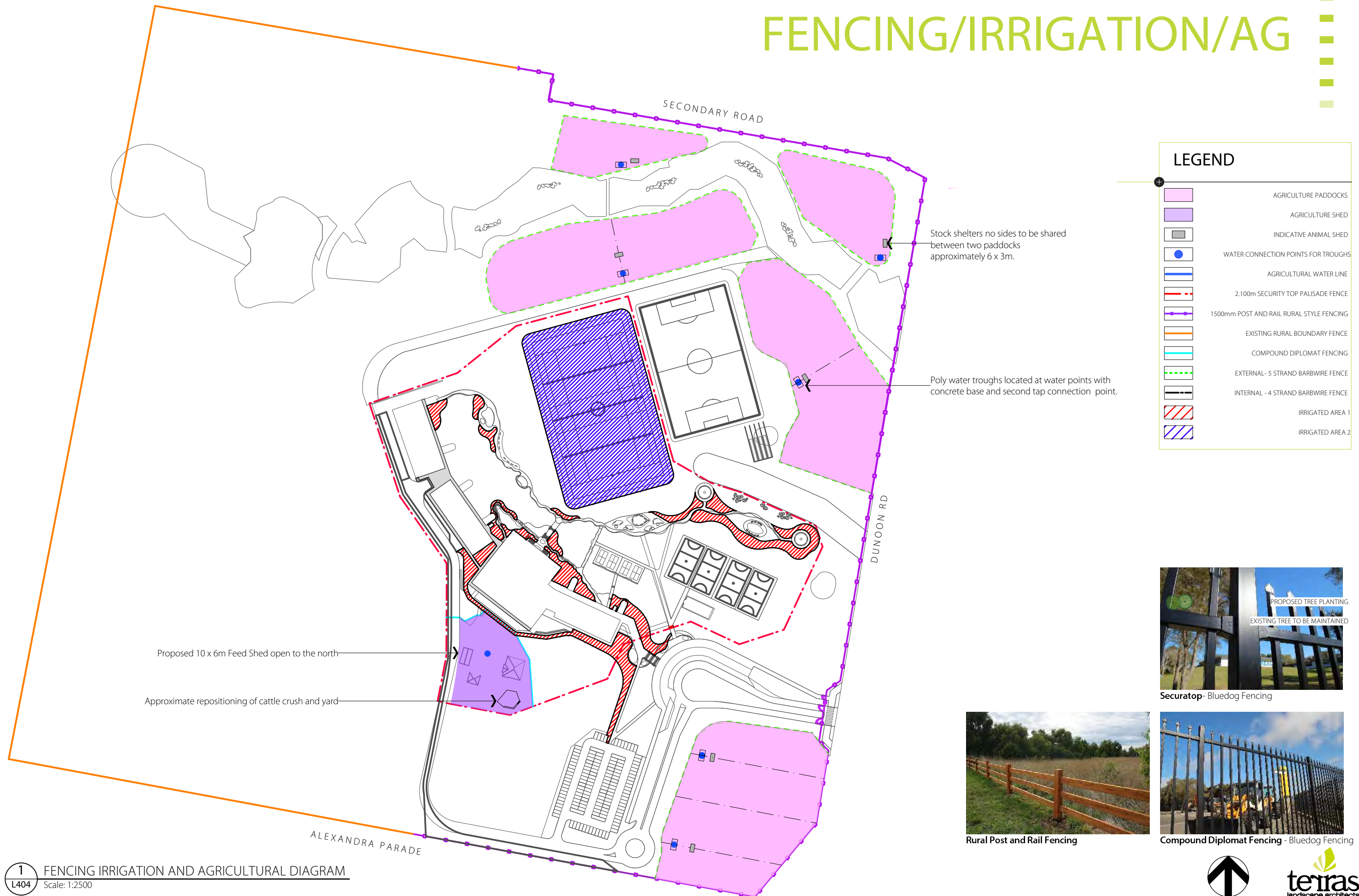
MEDIUM

LOW

REMOVE



# FENCING/IRRIGATION/AG





# FEATURE PLANTING PALETTE

SIGNIFICANT SHADE TREES



*Araucaria cunninghamii* - Hoop Pine (E)



*Eucalyptus tereticornis* - Forest Red Gum (E)



*Ficus macrophylla* - Moreton Bay fig (E & F)



*Casuarina cunninghamiana* - River Sheoak (E)



*Lepostemon confertus* - Queensland Brush Box (N)

SMALL- MEDIUM TREES



*Archirhodomyrtus beckleri* - Rose Myrtle (E)



*Backhousia citriodora* - Lemon Myrtle (E & F)



*Tristaniopsis laurina* - Water Gum (E)



*Waterhousea floribunda* - Weeping Lilly Pilly (E & F)



*Cupaniopsis anacardioides* - Tuckeroo

SHRUBS



*Eutaxia obovata* - Eggs and Bacon (N)



*Callistemon citrinus* 'Anzac' - White Bottlebrush (N)



*Acacia melanoxylon* - Sally Wattle (E)



*Banksia aemula* - Wallum Banksia (E & F)

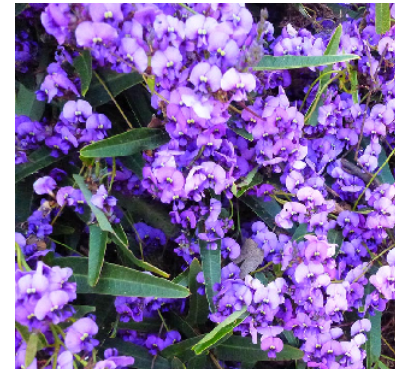


*Ceratopetalum gummiferum* - N.S.W Christmas Bush

GROUND COVERS



*Myoporum parvifolium* - Creeping Boobialla (N)



*Hardenbergia violacea* - Native Sasparilla (E)



*Casuarina glauca* 'Cousin It' - She-Oak (N)



*Ficinia nodosa* - Knobby Cub Rush



*Lomandra longifolia* - Lomandra little con



*Pennisetum alpecuriodes* - Swamp foxtail

(E) Endemic to site (F) Edible/Bush tucker component (N) Australian Native

**Indicative Plant Palette.**  
Full Plant Palette to be developed in collaboration with Ngulingah Nursery.





# BUSH TUCKER PLANTING PALETTE

BUSH TUCKER TREES



*Acronychia oblongifolia*- White Aspen(E & F)



*Alchornea subcinereus*- Native Quince (E & F)



*Macadamia integrifolia*- Macadamia (N & F)



*Diospyros australis*- Black Plum (E & F)

SHRUBS



*Syzygium australe*- Big Red Lilly Pilly (E & F)



*Citrus australasica*- Finger Lime (E&F)



*Capparis arborea*- Native Pomegranate (E)



*Eutaxia obovata*- Eggs and Bacon (N)

GRASSES



*Gahnia sieberiana*- Saw Sedge (E)

LOW SHRUBS



*Alpinea caerulea*- Native Ginger (E & F)



*Dianella caerulea*- Blue Flax Lilly (E & F)



*Austromyrtus dulcis*- Midgenberry (E & F)



*Juncus usitatus*- Common Rush (E)



*Themeda triandra*- Kangaroo grass

BIO BASIN PLANTING



*Lomandra hystrix*- Creek Mat-Rush (E)



*Pennisetum alopecuroides*-Swamp foxtail (N)



*Potamophila parviflora*- Hastings River Reed (E)



*Themeda triandra*- Kangaroo grass



*Juncus usitatus*- Common Rush (E)

(E) Endemic to site (F) Edible/Bush tucker component (N) Australian Native

**Indicative Plant Palette.**  
Full Plant Palette to be developed in colaboration with Ngulingah Nursery.





# SWALE PLANT PALETTE

SWALE PLANTING

SIGNIFICANT SHADE TREES



*Eucalyptus tereticornis* - Forest Red Gum (E)



*Ficus macrophylla*- Moreton Bay fig (E & F)



*Casuarina cunninghamiana*- River Sheoak (E)

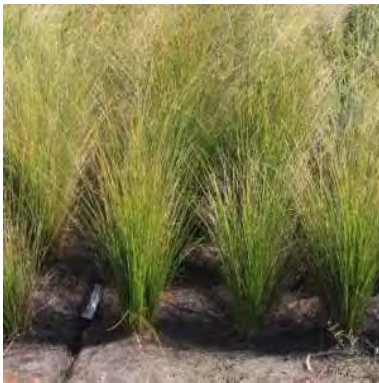


*Melaleuca sieberi*- River bottlebrush

SHRUBS



*Ficinia nodosa* - Knobby Cub Rush



*Carex appressa* - Tall Sedge



*Imperata cylindrica*- Blady grass



*Pennisetum alpecuriodes*- Swamp foxtail



*Themeda triandra*- Kangaroo grass

LOW DENSITY PLANTING

GRASSES



*Eutaxia obovata*- Eggs and Bacon (N)



*Callistemon citrinus* 'Anzac'- White Bottlebrush (N)



*Casuarina glauca* 'Cousin It'- She-Oak (N)



*Myoporum parvifolium*- Creeping Boobialla (N)



*Melaleuca thymifolia*- Thyme honey myrtle



*Leptospermum liversidgei* - Olive tea-tree



*Ficinia nodosa* - Knobby Cub Rush



*Themeda triandra*- Kangaroo grass



*Pennisetum alpecuriodes*- Swamp foxtail

Indicative Plant Palette.

Full Plant Palette to be developed in colaboration with Ngulingah Nursery.





# CONNECTION WITH COUNTRY



Buninj- Echidna Story



Outdoor learning areas to connect students with nature.



Collaborative artwork with students and local first nations groups to be displayed along school entry walkway, as part of the Welcome to Country. Dual language plaques to be placed through school for educational development



Engraving, coloured concrete, patterns, and material choices to talk to place and culture.



Zones for gathering & cultural practice including Yarning Circles and Dance Circle.



Narrated Bush tucker walk with organic stone seating for outdoor learning pockets.

Sight lines to culturally significant local landmark of Jumping Ant Hill maintained

